

Premier

™

Security Ballistic & Blast Ltd



RESIDENTIAL DOORS & WINDOWS



Product Catalogue

+44 (0) 208 559 8295 sales@premier-ssl.com www.premier-ssl.com

RESIDENTIAL STREET DOORS, WINDOWS & SAFE ROOMS

Security Levels

LPS1175 SR5 (E10)

LPS1175 SR4 (D10)

LPS1175 SR3 (C5)

LPS1175 SR2 (B3)

Switchable Glass
(Time delay linked to security system)

Blast Levels

EXV 25

Ballistic Levels

FB2—FB7

Fire

EI30/ EI60/EI90

EI20

Systems

Residential Street Doors

Windows

Bi-Fold Windows

French Doors

Panic Rooms

Walk-in Safe

Security Rooms

Switchable Glass



Targeting carbon-neutrality

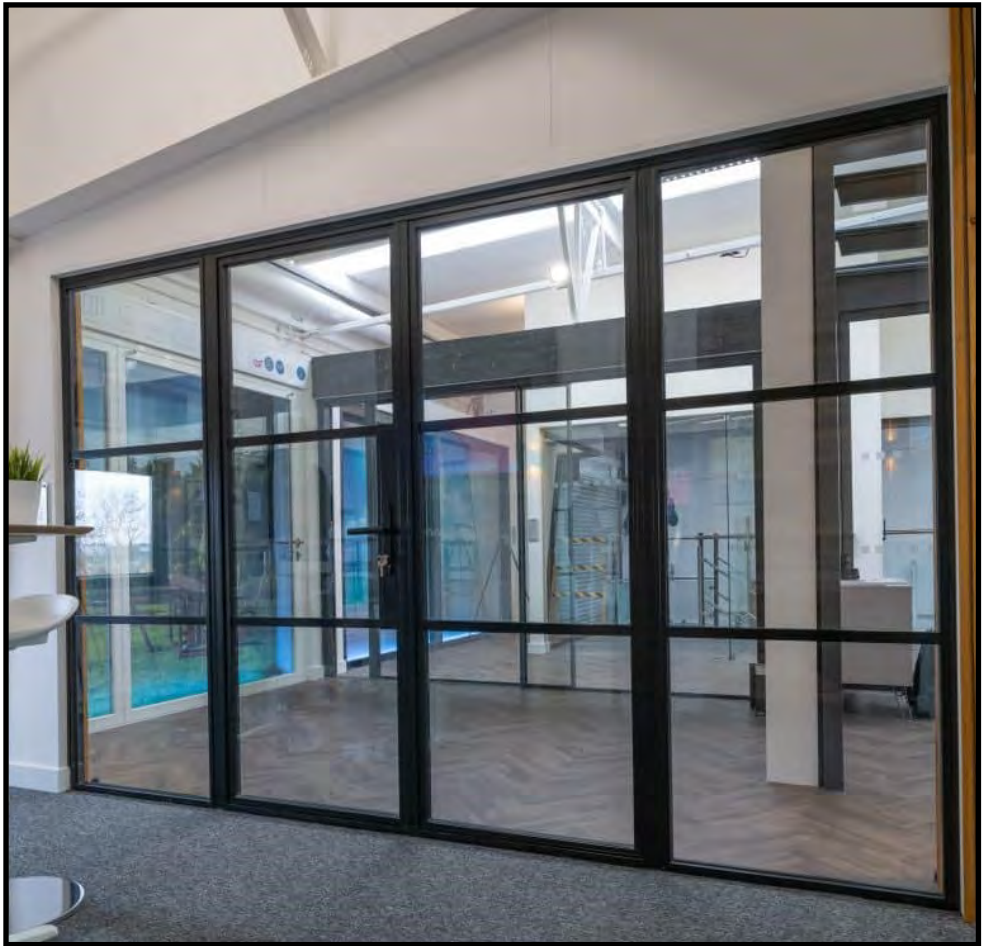
Premier Security Ballistic & Blast Ltd is dedicated to a positive legacy through sustainable security product fabrication and maintenance. We aim to reduce resource consumption, enhance community well-being for a healthier environment and achieve our carbon neutral targets by implementing energy-efficient

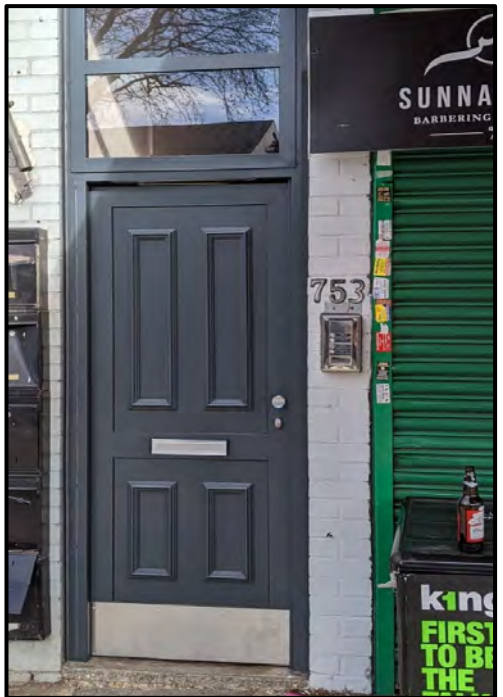


LPCB TESTED PRODUCTS

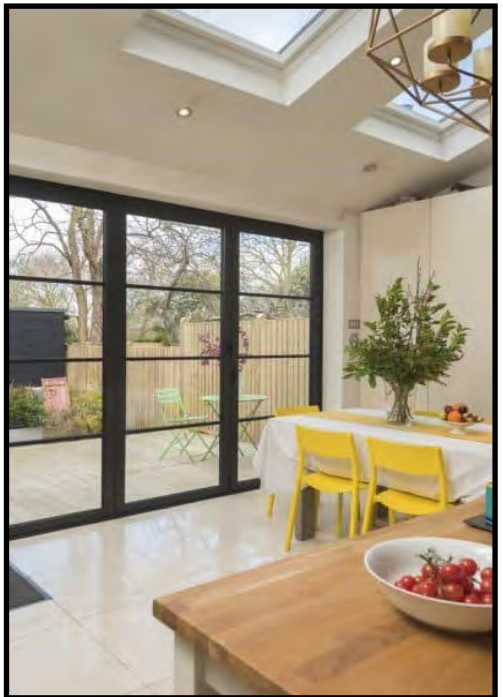


+44 (0) 208 559 8295 sales@premier-ssl.com www.premier-ssl.com









Premier

™

Security Ballistic & Blast Ltd



Premier Security Ballistic & Blast Ltd
20-21 Roebuck Road, Essex
England IG6 3TU



Product Catalogue

+44 (0) 208 559 8295 sales@premier-ssl.com www.premier-ssl.com