

Premier

™

Security Ballistic & Blast Ltd



SECURITY DOORS



Product Catalogues

+44 (0) 208 559 8295 sales@premier-ssl.com www.premier-ssl.com

STANDARDS

Premier's LPCB-tested doors and side screens are fire-rated and thermally broken achieving five levels of security. We offer solid, fully glazed and louvre doors with accompanying top and side panels



	SR4	SR3	1056 FIRE Glazed/Solid/ Louvre	SR2	SRB
SINGLE DOOR (Max H-W) Opening	6.07—1.7 Outward	6.07—1.7 Out/Inward	2547—1311 Out/Inward	3.0—1.7 Out/Inward	3.0—1.7 Out/Inward
With Screens (Max H-W)	3.06—Unlimited	Unlimited	—	6.0—Unlimited	6.0—Unlimited
DOUBLE DOOR (Max H-W) Opening	3.06—3.028 Outward	3.06—3.28 Out/Inward	— —	2.35—3.3 Out/Inward	2.35—3.3 Out/Inward
With Screens (Max H-W)	3.06—Unlimited	3.06—Unlimited	—	6.0 - Unlimited	Unlimited
Fire rating	E90/ EI60	E90/ EI60	E90/ EI60	E90/ EI60	E90/ EI60
Locking options	23	23	1	13	13
Thermally Broken	Y	Y	Y	Y	Y

Security Levels

LPS1175 SR4 (D10)

LPS1175 SR3 (C5)

Lps1056 (Duel Cert Fire/Security)

LPS1175 SR2 (B3)

LPS1175 SRB

Accessibility

Access Control compatible

Automation

Power-assisted opening

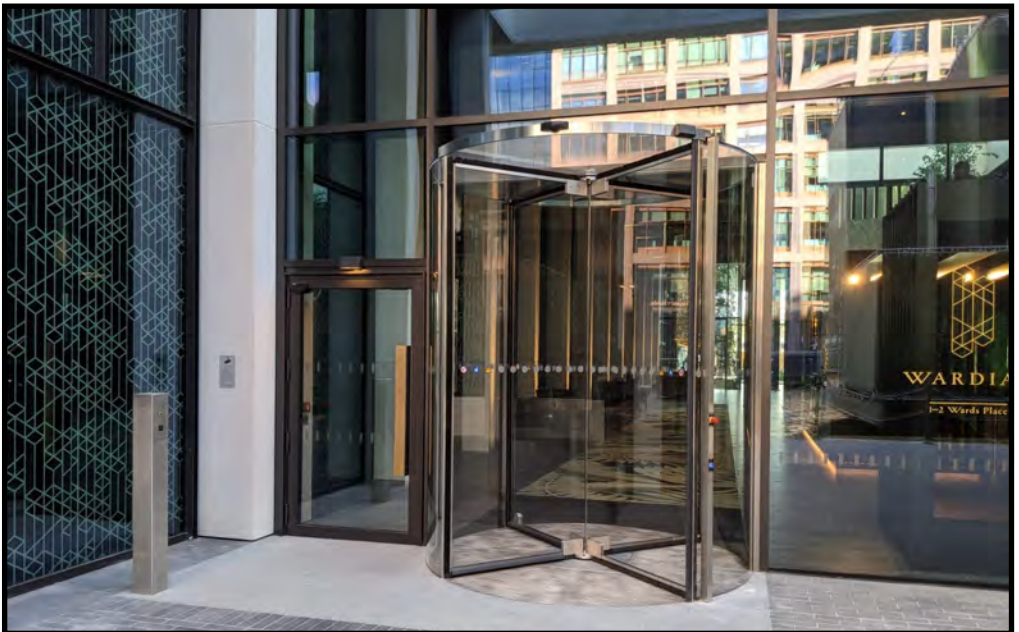
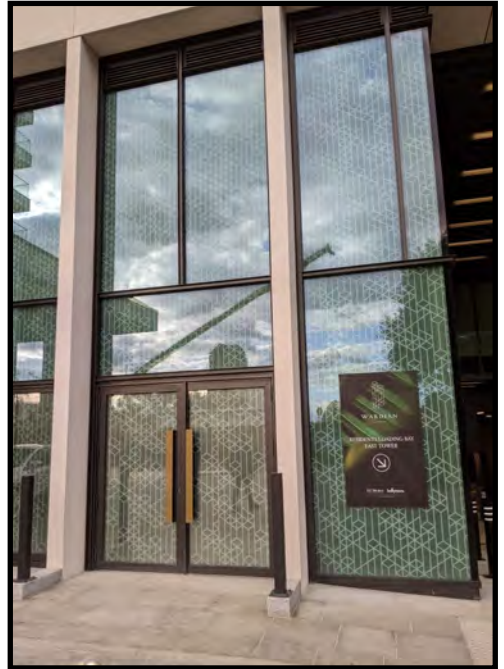
TARGETING CARBON NEUTRALITY

Premier Security Ballistic & Blast Ltd is dedicated to a positive legacy through sustainable security product fabrication and maintenance.

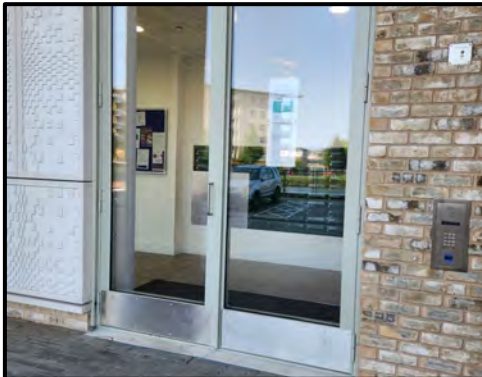
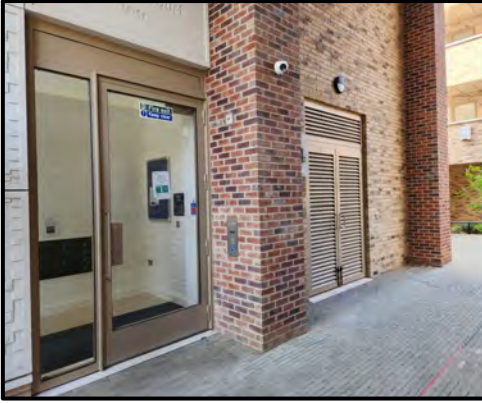
We aim to reduce resource consumption, enhance community well-being for a healthier environment and achieve our carbon neutral targets by implementing energy-efficient practices and investing in renewable resources.

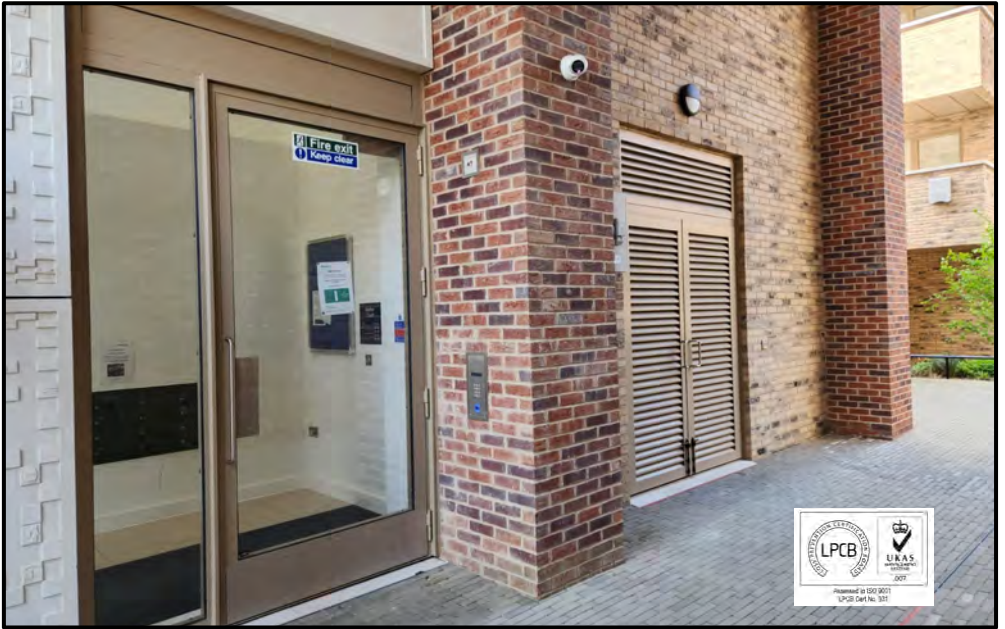


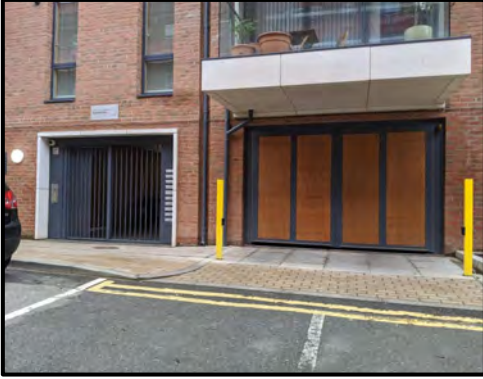
LPCB TESTED PRODUCTS











Premier

™

Security Ballistic & Blast Ltd



Premier Security Ballistic & Blast Ltd
20-21 Roebuck Road, Essex
England IG6 3TU



Product Catalogues

+44 (0) 208 559 8295 sales@premier-ssl.com www.premier-ssl.com